



HALFEN

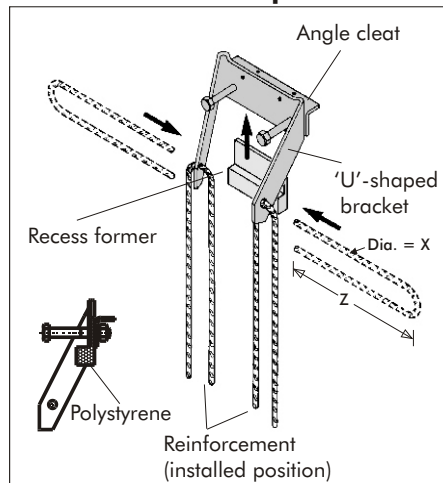
Your Best Connections

Assembly and Installation Guidance for Halfen Panel Support Fixing Type FPA-5

FPA-5 - 07/00 - EE

Page 1/2

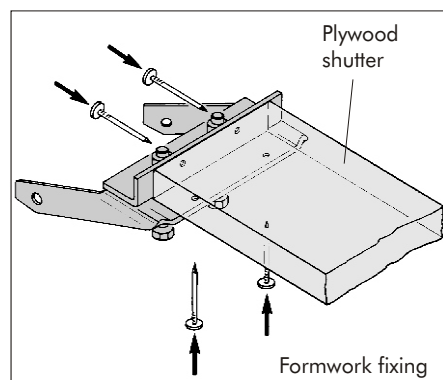
Installation of lower component FPA-5-E in the wall panel:



1. Check polystyrene void former is firmly in place.
2. Insert the reinforcing stirrups through the holes provided (Sizes shown below).

Essential Reinforcement			
FPA5 Load capacity	Diameter x	Length z	Unbent length
5.0	6	250	500
8.0	6	250	500
11.5	8	250	525
16.0	8	350	700
22.0	8	400	800
34.0	10	500	1025
46.0	12	500	1050
56.0	12	600	1200

3. Fix with nails to the formwork. Nail holes are provided for this in both the 'U' shaped bracket and the angle cleat.



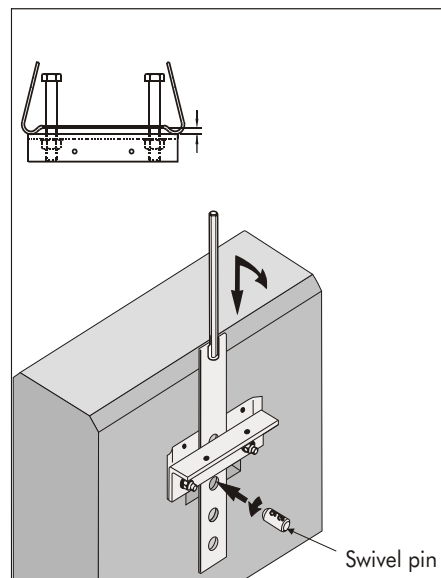
Assembly on site:

1. The fixing bolt should be installed in the concrete structure in accordance with the manufacturer's instructions.

For sizes up to 22.0kN cast in channel is the preferred option.

For larger sizes resin anchors may be the most convenient fixing, subject to discussion.

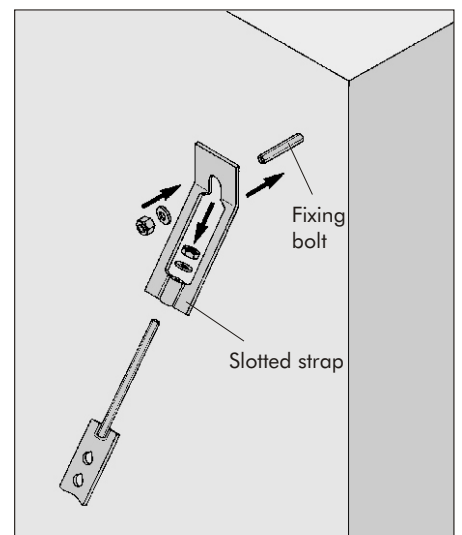
2. Remove polystyrene from the lower fixing.
3. Slide the perforated strap between the 'U'-shaped bracket and the angle cleat.
4. Adjust the perforated strap roughly to the required length, (design setting out of swivel pin is shown on page 2), fix the perforated strap by means of the swivel pin (turn swivel pin 180°). Bend the perforated strap over the angle cleat.



5. Check the nuts on the angle cleat to the torque values quoted in the table below.

Recommended torque for bolts on angle cleat - lower fixing	
Load capacity (kN)	Torque
5.0	5
8.0	5
11.5	10
16.0	15
22.0	15
34.0	30
46.0	60
56.0	60

6. Fix the slotted strap to the threaded rod part of the perforated strap with the nuts and washers.
7. Secure the slotted strap with the fixing bolt.

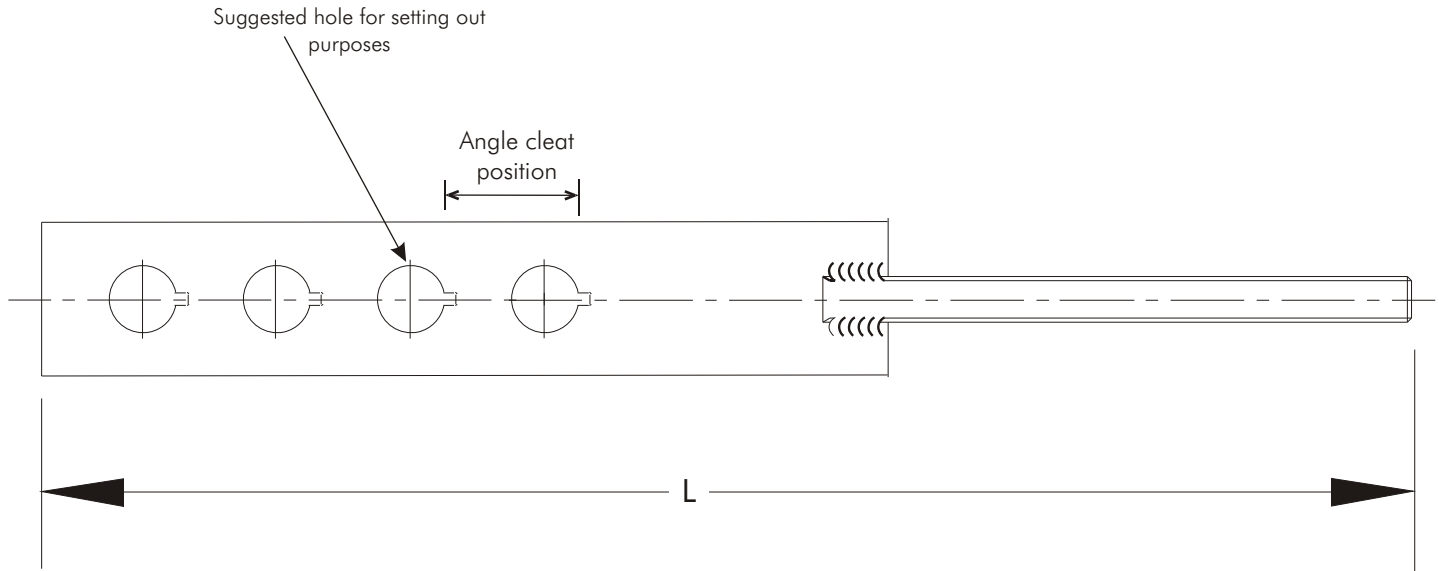


8. Apply Molykote and position complete assembly onto the support arm.

Assembly accessories:

- open ring spanner
- Molykote

Perforated strap details for a four hole strap



FPA 5 Load capacity	Length (L) of perforated strap and threaded rod	Cavity range
5.0	246	60 to 90
8.0	278	60 to 110
11.5	341	60 to 120
16.0	392	60 to 140
22.0	405	60 to 140
34.0	480	70 to 160
46.0	556	90 to 160
56.0	609	100 to 190

- Cavity less than 80mm please check with Halfen Ltd.
- When specifying 5.0 kN load hangers please check with Halfen Ltd.
- For larger cavities please contact Halfen Ltd. for the standard range of longer straps.
- All holes in the strap are safely useable if site conditions require adjustment.