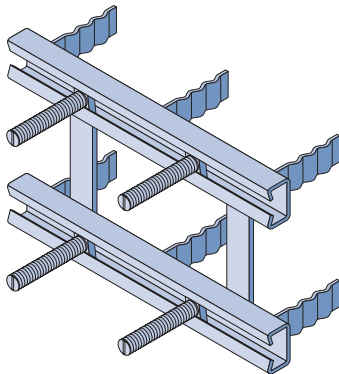


Formwork and filler

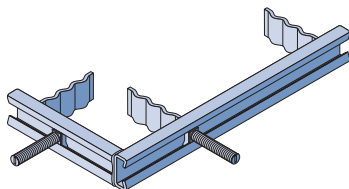
Fabricated channel pair

For a typical four-bolt connection channels can be welded in pairs at the factory prior to galvanising, or supplied in stainless steel.



Fabricated corner

If fixings are required close to an external corner, Halfen will supply a fabricated corner, as shown below. The channel is normally a short length, but can be any length to order.



T-head bolts

The T-head bolts are inserted into the channel at any point along the length after the concrete is cast.

Short anchors: bolt anchors

For thin concrete units bolt anchors are available with shorter dimensions to suit the following channels:

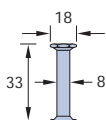
HTA-V 40/25

HTA-V 40/22

HTA-V 38/17

HZA-V 41/22

The dimensions of the anchors for all the above channels are as follows:



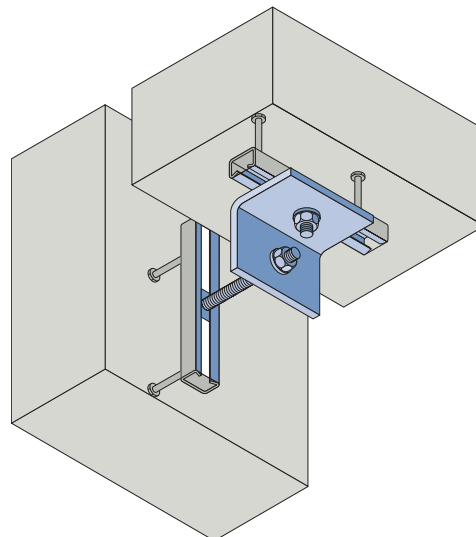
Allowable loads may be reduced, please consult Halfen Limited.

Captive locking plates

For large adjustments on threaded rod or for differential movement Halfen supply captive locking plates, which are end-entered into the channel and packed in polystyrene before dispatch. Once the concrete is cast the captive locking plate cannot be removed. Thread diameters are normally M12 or M16 and channel sizes are normally 49/30, 40/25 or 38/17.

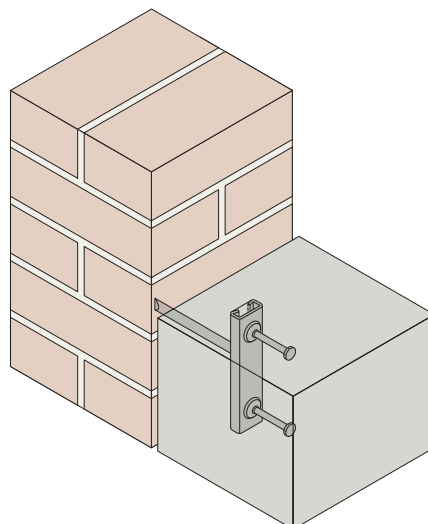
Pre-cast application

- channel allows for differential movement
- long studding simplifies in/out adjustment.



Refurbishment application

- channel allows for differential movement
- resin anchor inserted into existing wall
- captive locking plate in channel
- cast-in channel in new concrete.

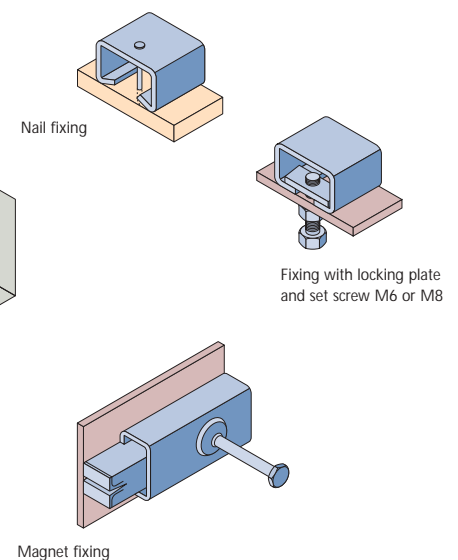


Fixing to formwork

Halfen channels are normally fixed by nailing directly to the formwork.

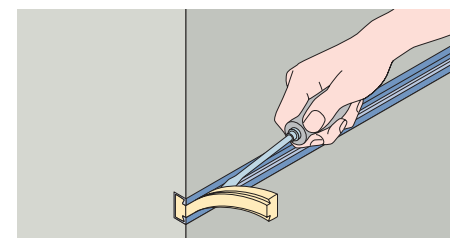
Alternatively, the formwork may be drilled and the channel fixed using small diameter threaded rod, typically M6, and a locking plate. The use of locking plates may ease striking of the formwork.

For steel formwork, magnets are available.



Filler

To keep laitance out of the channel during casting a filler is required. Normally, polystyrene is used, but Combi foam strip filler is also available to order.



Combi filler